

An Introduction to Saint-Gobain

UK & Ireland



**MAKING
THE WORLD
A BETTER
HOME**

As part of the Saint-Gobain Group, we are one of the world's top 100 industrial groups.

Saint-Gobain UK & Ireland manufactures high performance products and solutions that enhance daily life through creating great living places. We employ 5,600 colleagues and operate from 40 manufacturing and distribution sites in the UK and Ireland principally serving the construction sector, as well as automotive, industrial, energy, agriculture, telecommunications, utilities and healthcare.

Over 90% of our business serves the construction market, where we work closely with our customers to provide solutions that help developers, building owners, local authorities, building contractors, house builders and home owners create new buildings or renovate existing ones.

We place an important emphasis on helping our customers develop skills in building performance, improving comfort in buildings and developing practical skills to help them install our solutions. To do this we operate 7 training academies around the UK and have formal affiliations with 56 Construction Technical Colleges.

As well as providing high-performing solutions, we are focussed on how we can play a strong part in responding to some of the world's biggest challenges – including urbanisation, climate change, resource depletion, and wellbeing.

19 brands in the
UK and Ireland

40 Manufacturing
and distribution
locations

over

5,600
employees in the
UK and Ireland

The background of the entire page is a photograph of a modern glass skyscraper. The Saint-Gobain logo is prominently displayed on the glass facade, featuring a stylized red and blue graphic above the company name in large blue letters.

SAINT-GOBAIN

OUR PURPOSE

To make the world a better home

OUR VISION

To be the worldwide leader in light and sustainable construction

OUR VALUES

Saint-Gobain sets out its values in its General Principles of Conduct and Action which is applied in every business.

Adherence to these principles are a requirement to being part of the Saint-Gobain group.

OUR PRINCIPLES

Of Conduct:

- Professional commitment
 - Respect for others
 - Integrity
 - Loyalty
 - Solidarity
-

Of Action:

- Respect for the law
- Caring for the environment
- Worker health and safety
- Employee rights



72%

OF OUR SALES FOCUSSED
ON SUSTAINABLE
CONSTRUCTION SOLUTIONS*

358

YEARS OF EXPERIENCE

283



SAINT-GOBAIN HAS BEEN
RECOGNISED FOR THE SECOND
YEAR IN A ROW ON THE "CLIMATE
CHANGE A LIST", AMONG 283
COMPANIES OUT OF MORE THAN

15,000 COMPANIES THAT
ANSWERED THE CDP'S 2022
CLIMATE CHANGE QUESTIONNAIRE.

3,700



EMPLOYEES WORLDWIDE ENGAGED IN R&D
ACTIVITIES

7

INTERNATIONAL
CROSS BUSINESS
CENTRES



INNOVATION AT SAINT-GOBAIN

Never before has the need for the construction industry to innovate in order to meet the challenges of creating a truly sustainable building been more important.

Research, development and innovation are at the heart of our strategy, ensuring we explore new horizons and help our customers to grow their own businesses.

*Global Top 100 Innovators: <http://top100innovators.com>

*Saint-Gobain Group Annual Sales 2022: https://www.saint-gobain.com/sites/saint-gobain.com/files/media/document/FY-2022_ENG-a.pdf

* Source: https://www.saint-gobain.com/sites/saint-gobain.com/files/media/document/20221214_CDP%20A%20List_VA.pdf

A UNIQUE CAPABILITY TO PROVIDE PRODUCTS AND SOLUTIONS FOR INDUSTRY

We care about building better for people and the planet by offering solutions that deliver sustainability and performance to drive the transformation of the construction market.

Some of the best known and respected brands are part of the Saint-Gobain family of businesses in the UK & Ireland. They include British Gypsum, Gyproc, Isover, Glassolutions, Saint-Gobain Weber, Saint-Gobain Glass, Saint-Gobain PAM, Pasquill and Ecophon.

We have over 40 manufacturing sites across the UK & Ireland. We produce and distribute a range of high performance products and solutions that contribute to a more sustainable built environment, including:

- **Acoustic and thermal insulations, plasterboard and building solutions**
- **Energy-efficient glass and glazing solutions**
- **Industrial and construction mortars, fixings and façades**
- **High-performing plastics, ceramics and abrasives**
- **Premier ductile and cast iron pipes**
- **Construction chemicals for specialist applications and decarbonising construction**
- **Off-site timber and steel frame structural solutions**



OUR SOLUTIONS BRING SUSTAINABILITY AND PERFORMANCE TO OUR CUSTOMERS

SUSTAINABILITY

PROTECTION OF THE PLANET

- Reduction of CO₂ emissions and energy consumption
- Energy renovation
- Circularity of solutions

COMFORT

- Health and safety
- Visual comfort, acoustics, air quality
- Low environmental impact

PERFORMANCE

ECONOMIC VALUE

- Productivity
- Financial earnings
- Affordable housing

CUSTOMER EXPERIENCE

- Aesthetics and design
- Trusted solutions
- Recovery and recycling services

EXTERIOR SOLUTIONS



Saint-Gobain Glass manufactures innovative and environmentally-friendly flat glass products to serve a range of construction markets.



A processor and distributor of glass and glazing systems in the UK.



Weber specialise in the manufacture of construction mortar products including renders and decorative finishes, tile fixing products, floor screeds, technical mortars and external wall insulation systems.

OSS (OFF-SITE SOLUTIONS)



Intrastack provides panelised, light-gauge steel frame (LGSF) solutions, constructed off-site; bringing certainty to all areas of the project process.



Specialists in the supply of engineered timber solutions to all sectors the construction industry, with a national network of design and manufacturing sites.



Roofspace manufactures, delivers and installs high quality panelised roofing and whole house solutions throughout the UK.



Scotframe manufactures and supplies timber frame kits to self-builders and commercial developers, from factories located in Scotland.

SAINT-GOBAIN INTERIOR SOLUTIONS



The UK's leading manufacturer of high-performance drylining solutions, that deliver sustainability and performance for both our people and our planet. Through pioneering solutions we will help create a positive legacy, building great spaces to work, rest and play.



Manufactures polyisocyanurate (PIR) thermal insulation. Providing high performance PIR insulation solutions suitable for roof, floor and wall applications in residential and non domestic buildings.



Develops mineral wool insulation solutions that deliver sustainability and performance. It serves those who build and those who spend time in buildings, while addressing a variety of markets in construction, transportation and industrial applications.

IRELAND



Gyproc is the market leader in plaster, plasterboard and drylining systems, manufacturing in Ireland since 1936 and has become a major authority in the Irish construction industry.

RETAIL SOLUTIONS



Artex distributes a wide range of construction products from market leading brands such as Gyproc, Thistle and Weber. From fillers and plasters to tape and render, Artex supply both trade and retail customers through flexible nationwide delivery, including a 48-hour parcel service.

SAINT-GOBAIN BRANDS, PRESENT IN THE UK & IRELAND BUT OPERATING GLOBALLY

Saint-Gobain has several global brands which also are present in the UK – these brands manufacture products which are construction specialities or high performance solutions. Discover more about these brands below:

HIGH PERFORMANCE SOLUTIONS AND CONSTRUCTION SPECIALITIES



A leading supplier of acoustic suspended ceilings, free-hanging units and wall absorbers in the UK & Ireland. Solutions for all sectors, including education, health, office, industry and retail.



A world-leading supplier of industrial plaster and gypsum products with high performance solutions for fibrous and decorative plasters, construction materials, ceramics, dental and personal care and food, agriculture and environment markets.



Manufacturer of elastomeric insulation materials for the technical pipe insulation in domestic technology, building technology and industry.



Leca® Lightweight Aggregate (LWA) is a natural, unique and sustainable lightweight clay aggregate. Leca® LWA has remarkable properties which ensure its versatility for use in a vast number of structural and geotechnical applications.



Saint-Gobain PAM UK is the premier supplier of ductile iron pipes, fittings, valves and hydrants for the utilities sector, ductile iron access covers and gratings for the highways and telecoms sector and cast iron soil, drain and rainwater systems for the building industry.



PAM building specialise in the manufacture of cast iron above and below ground drainage systems for buildings. At the heart of their solutions is cast iron, which delivers fantastic performance in many areas: sustainability, fire resistance, acoustics, robustness, and service life. The Pre-Assembly range is designed to suit customers site needs and not only saves time on site but also reduce waste.



Focused on the construction and industrial markets, ADFORS offers solutions based on a complete range of textile and coating technologies using fiberglass yarns, synthetic fibres, and natural fibres.



SAINT-GOBAIN SOLUTIONS SUPPORT NEW BUILD, COMMERCIAL BUILDINGS AND RENOVATION

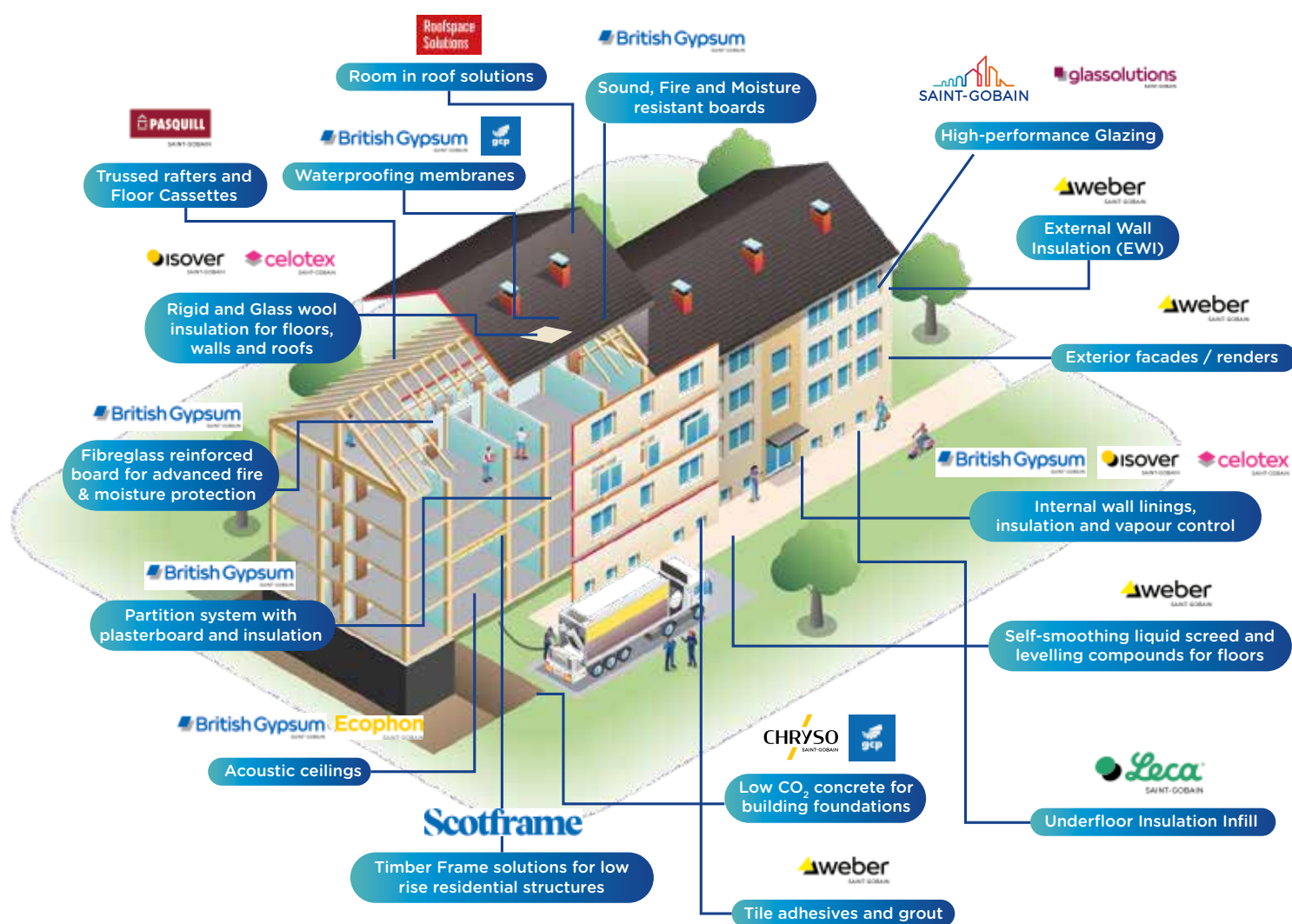
Our solutions help to create high-performing buildings that combine comfort, sustainability and performance.

We have solutions for all building types whether residential or commercial, new build or renovation.

Our solutions are developed in collaboration with our customers to ensure the correct specification of products and solutions are chosen to meet the performance customers require for their project.

Our solutions can include a high proportion of Pre-Manufactured Value (PMV) via open or closed panel timber or steel construction.

Our solutions for residential new build and renovation



Our services to support customers



Waste collection & recycling services



Professional site management, safety, installation training



Building performance testing (Air tightness/thermal)



Technical Advice Support



Multi-brand logistics service for site deliveries provided by Artex

Our solutions for new commercial buildings



SAINT-GOBAIN SURFACE SOLUTIONS



We offer powerful, precise and user-friendly solutions enabling customers to shape and surface finish all types of materials even in the most complex and challenging applications across a diverse range of markets.

SAINT-GOBAIN HIGH PERFORMANCE SOLUTIONS



ABRASIVES / CERAMICS / PERFORMANCE PLASTICS / LIFE SCIENCES

SAINT-GOBAIN ABRASIVES:

Saint-Gobain Abrasives is the world's leading manufacturer of abrasives, offering powerful, precise and user friendly solutions enabling customers to shape and surface-finish all types of materials even in the most complex and challenging applications across a diverse range of markets.

SAINT-GOBAIN LIFE SCIENCES

Saint-Gobain Life Sciences is a world leader in the development and integration of innovative materials and components, creating customized single-use solutions for the biopharmaceutical and cell therapy markets. Through its unparalleled technological expertise and worldwide resources, it develops integrated solutions for critical fluid management to meet your evolving needs.

SAINT-GOBAIN CERAMICS:

Saint-Gobain Cermics designs, develops, and supplies solutions and services for extreme operating industrial conditions. The engineered ceramics and refractory products are manufactured to the highest industrial standards and deliver enhanced performance while minimizing environmental impact.

PERFORMANCE PLASTICS

Saint-Gobain performance Plastics is a global leader in high-performance, technology-driven materials. With expertise concentrated on film and fabrics, it provides proven products, customized solutions, and complete systems to customers across a diverse range of sectors helping create innovative materials that provide protection, easy release, insulation, and friction control. And we seek to collaborate in making even more possible.



Designing and producing innovative textile solutions for reinforcement in the habitat and industrial markets, thanks to knowledge built over the past 50 years.



Farécla Products Ltd is a manufacturer of surface finishing products which are used on a wide variety of substrates from compounds and applicators, to paint cups and microfibre cloths.



Industrial performance abrasive solutions for cutting, grinding and sanding to polishing for the metal fabrication foundry, rail, construction and hardware, marine and energy industries.



The world leader in abrasives for over 130 years, providing the widest portfolio of cutting, grinding, blending, finishing and polishing solutions for all markets, materials and applications.



Designs and manufactures tolerance rings (radial spring fasteners) for the automotive, hard disk drive and appliance markets.



SWISSPACER's warm edge spacer bars insulate the edges of an energy efficient sealed unit, keeping the panes of glass apart and maintaining the integrity of the air gap that insulates a building from heat loss through windows.



Vetrotech fire resistant glass offers the ultimate protection for people and property, while providing the aesthetic and multi-comfort qualities you expect from architectural glass.



Provides diamond abrasive solutions for cutting, drilling, milling, bevelling and grinding of flat glass.

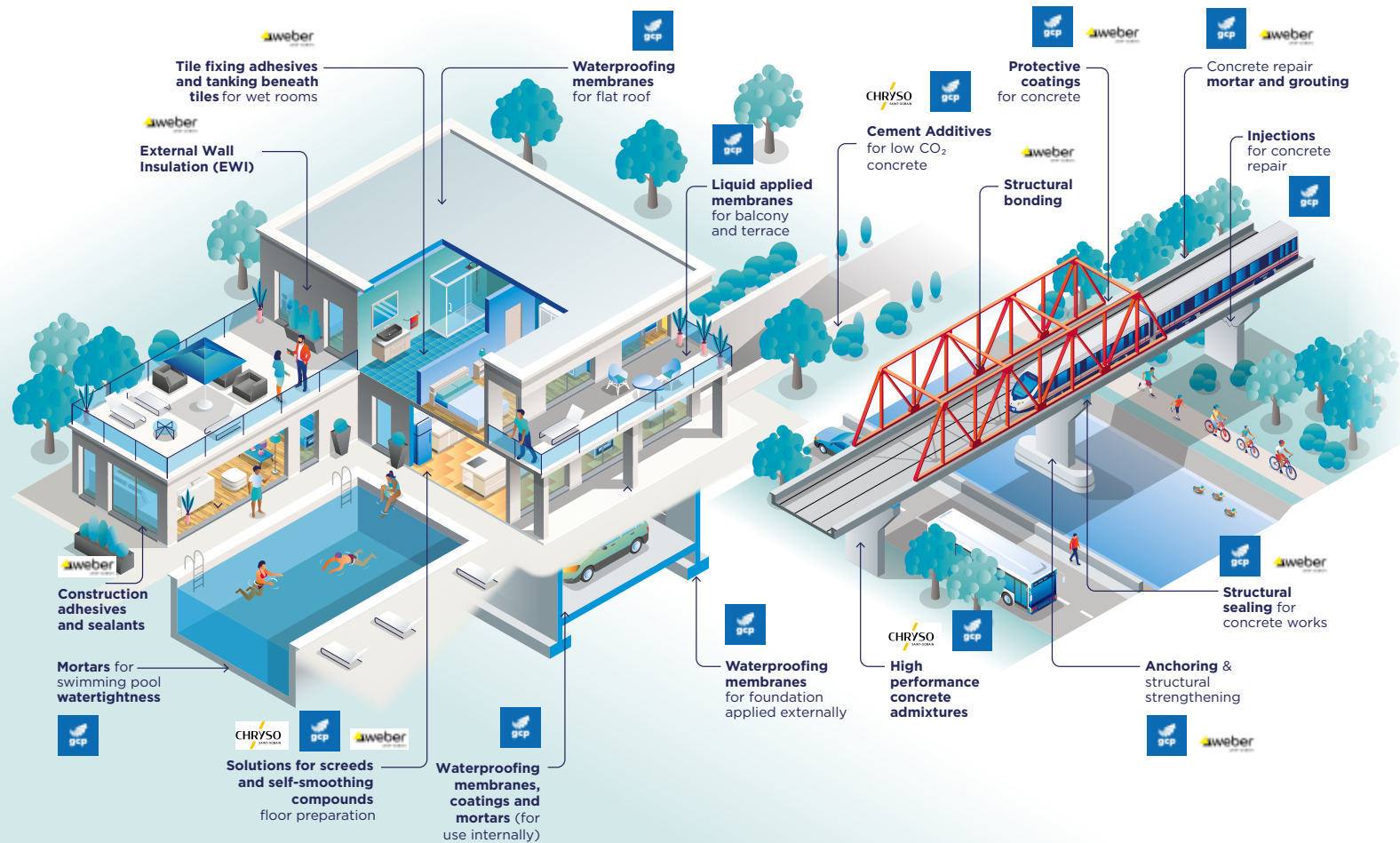


A manufacturer of acoustic and thermo-acoustic insulation products for diverse applications in the automotive, industrial and comfort sectors.

SAINT-GOBAIN CONSTRUCTION CHEMICALS

Saint-Gobain Group is developing innovative solutions, through its acquisitions in 2021 and 2022 of Chryso and GCP Applied Technologies. These acquisitions boost Saint-Gobain's footprint in construction chemicals which improve the performance of materials and help to decarbonize the construction sector.

SAINT-GOBAIN SOLUTIONS FOR CONSTRUCTION CHEMICALS AND BUILDING PERFORMANCE



GCP Applied Technologies:

GCP's portfolio of construction products includes concrete and cement additives, building materials and technologies that ensure specified quality and enhance business productivity. The world's most successful architects, producers, builders and contractors insist on GCP brands and solutions for their construction projects.

With products that last longer and make construction — and the manufacturing of its materials — more energy efficient and less wasteful, GCP makes a tangible difference on the carbon footprint of our planet.



CHRYSO designs, produces, markets and delivers chemical solutions that help creating sustainable building materials.

These solutions include concrete admixtures which are used to achieve concrete performance, produce low CO₂ concrete, reduce construction costs and enhance productivity.



Weber specialise in the manufacture of construction mortar products including renders and decorative finishes, tile fixing products, floor screeds, technical mortars and external wall insulation systems.

COMMITTED TO SUSTAINABLE CONSTRUCTION AND A NET ZERO FUTURE

Saint-Gobain is committed to being a leading contributor to the transformation to more sustainable construction.

Faced with the threat of climate change and the risks related to the average increase in temperature, we seek to support the development of a low-carbon economy.

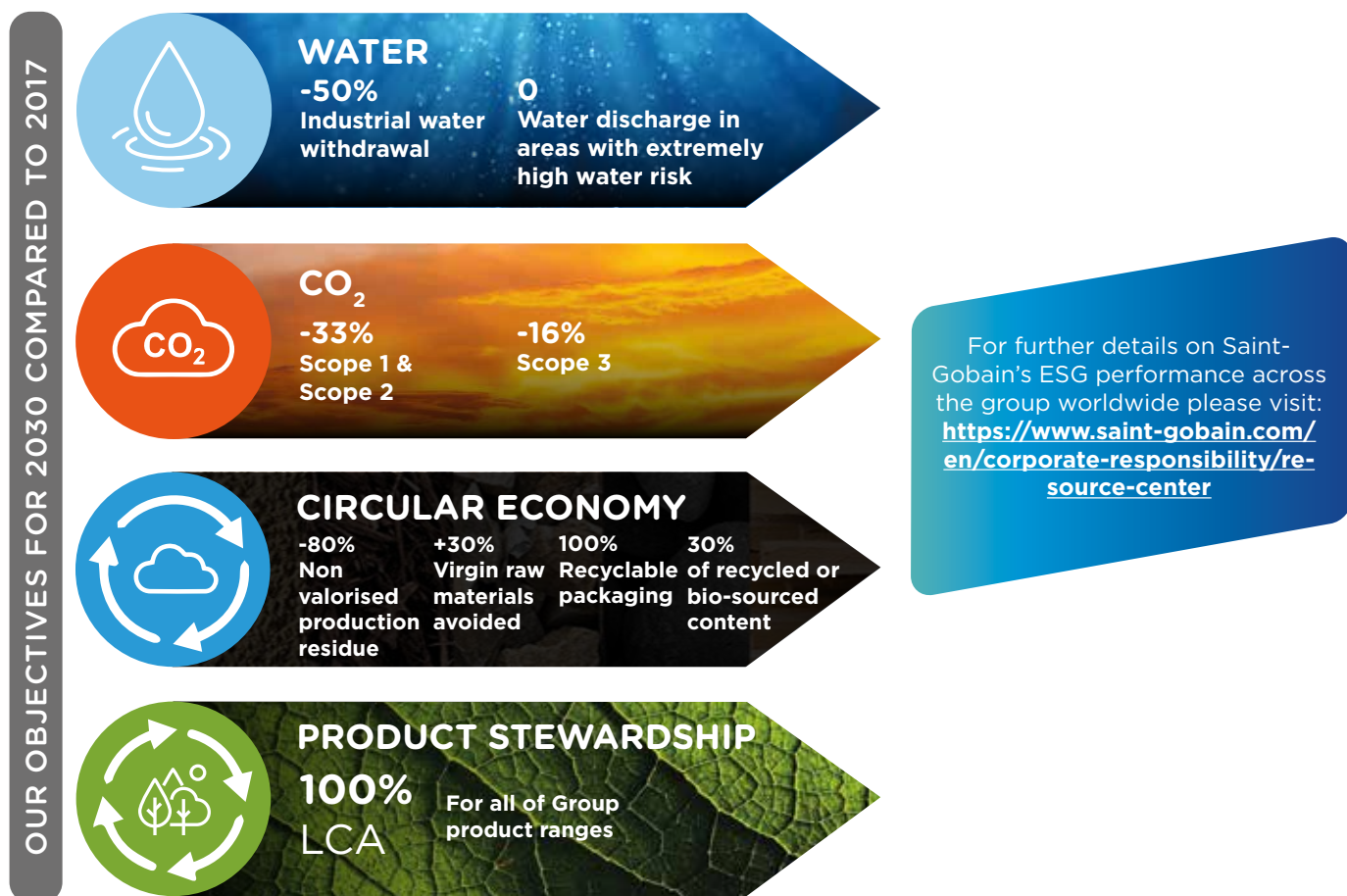
Our vision is to be the global leader in light and sustainable construction. Our objective is to help customers reduce their CO₂ emissions through the use of our products and solutions or by reducing the carbon impact of our products in production.

In 2019 at the UN Global Compact Saint-Gobain signed the 'Business Ambition for 1.5°C' pledge and set out our goal to achieve net zero carbon by 2050. As we make progress towards our 2050 goal, we strive to

reduce carbon in more areas of the business, moving from incremental improvements to significant step changes, being also able to offset during this period the potential increase of our emissions due to growth.

To achieve carbon neutrality, we have published a CO₂ roadmap. The roadmap incorporates the Group's new commitments through to 2030 in terms of reducing not only its direct and indirect carbon dioxide emissions, but also the emissions along its value chain. These new targets for 2030 (set out on the right) have been validated by the Science-Based Targets (SBT) initiative¹ which considers them aligned with the Group's 2050 net-zero commitment.

¹ <https://sciencebasedtargets.org/companies-taking-action>



For more information on our approach to Climate Change and Sustainability visit: www.saint-gobain.co.uk/CSR

eHome2

Saint-Gobain is committed to finding innovative solutions to some of the most pressing issues facing the construction industry, including the need to reduce carbon emissions and increase the energy efficiency of buildings.

Saint-Gobain has partnered with Barratt Developments and a host of innovative companies to understand how sustainable housing can be delivered at scale using construction solutions manufactured off-site, in line with our vision to be the worldwide leader in light and sustainable construction.

Working in the new state of the art facility at the University of Salford - Energy House 2.0 - Saint-Gobain and partners have constructed a three bed detached house, designed to meet future performance and regulation requirements. This project will provide an understanding of how to deliver zero carbon housing at scale using off-site lightweight construction solutions, and how these homes will meet the Future Homes Standard. Within eHome2 we are piloting the use of next generation heating and ventilation technologies as well as smart technology to enable occupants to change the temperature and turn on the shower at the click of a button.



“Saint-Gobain is investing in our future through the creation of sustainable solutions, driven by customer-centric innovation, to address the needs of tomorrow, today”.

*Tom Cox, Technical and Development Director,
Saint-Gobain Off-site Solutions*



FABRIC-FIRST APPROACH

The fabric-first approach ensures that the roof, walls, windows, floors and doors of a building are well insulated and air-tight, which helps to create an efficient and low energy building. eHome2 brings together Scotframe's high performing timber frame solution, sustainable glass mineral wool insulation from Isover, and glass with enhanced thermal insulation to reduce heat loss through the window. The solutions used for eHome2 have all been chosen for their ability to create a sustainable, efficient and comfortable home.

Almost two-thirds of the heat generated in a home is lost through the building fabric. And up to 35% can be lost through uninsulated walls.



eHome2



Saint-Gobain has partnered with Barratt Developments and a host of innovative companies to understand how sustainable housing can be delivered at scale using construction solutions manufactured off-site, in line with our vision to be the worldwide leader in light and sustainable construction.

OBJECTIVES

The eHome2 comprises innovative solutions from across the Saint-Gobain group together with other innovative partners.

The objectives of the eHome2 are to:

Understand how to deliver Net Zero carbon housing at scale using off-site, lightweight construction solutions

Monitor the performance of the house to inform future innovations

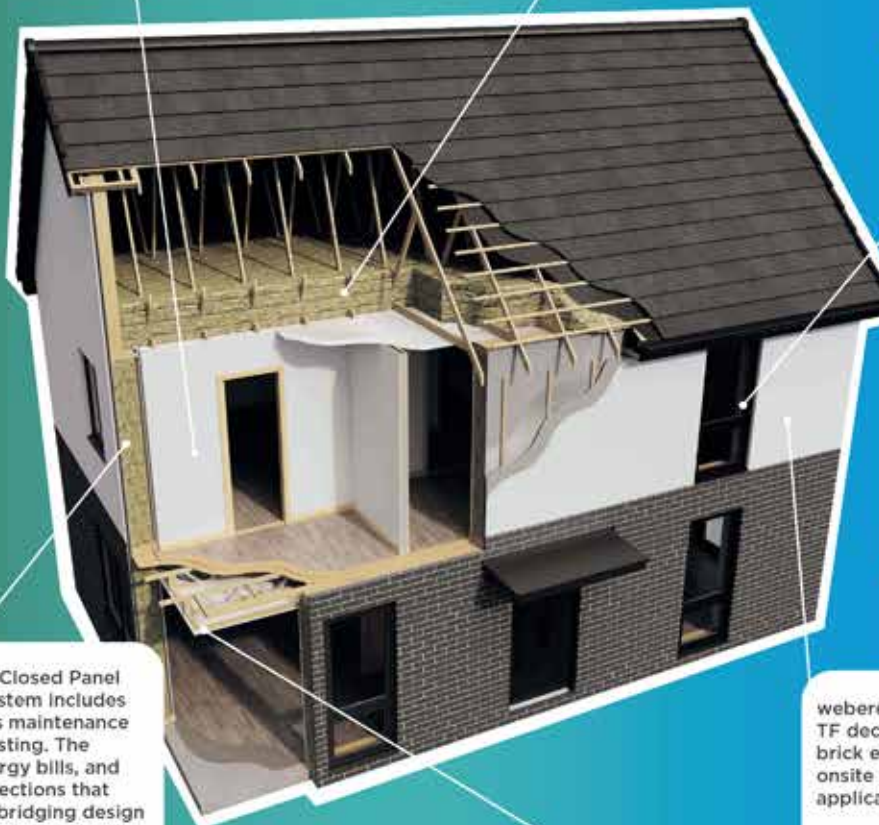
Research fabric and services efficiency, thermal comfort, usability and resilience to external climates

eHome2 has British Gypsum plaster on British Gypsum boards with ACTIVair[®] Technology plaster. ACTIVair[®] makes indoor air healthier by eliminating up to 70% of formaldehyde present in indoor air.

eHome2 also features light Gauge Steel (Ultrasteel) internal partitions and Magnetic plaster.



Isover's high-performing, sustainable glass mineral wool insulation products are installed at eHome2. This includes Acoustic Partition Roll, for internal partitions which delivers a measurable reduction in sound transmission. It also includes Timber Frame Roll 35 in the external walls and Spacesaver Plus in the loft which help to reduce heat loss within the building and decrease energy costs. They are manufactured in the UK with an electric furnace powered through a renewable energy tariff.



Saint-Gobain Glass' PLANITHERM ONE T low-e coated glass has enhanced thermal insulation optimised for both double and triple glazing. The UK manufactured glass reduces heat loss through the window, resulting in significant energy savings and has low solar gain, reducing overheating in the home. STADIP SILENCE acoustic laminated safety glass delivers enhanced security and safety, improved noise-control, and UV light protection to reduce furniture-fade.



The Category 2 Closed Panel timber frame system includes insulation that is maintenance free and long-lasting. The system cuts energy bills, and innovative connections that reduce thermal bridging design and enhance airtightness. With the inclusion of critical vapour control membranes, service zones and externally fitted battens applied in the factory the system speeds up build time and ensures a high performing fabric achieving 0.13 W/m2k.



Posi-JoistTM floor cassettes allow for the integration of services, particularly Mechanical Ventilation & Heat Recovery systems (MVHR). Top hung joist detail reduces thermal bridging at wall-floor interfaces. Roof trusses were used to construct a thermally efficient attic space. Both the floor cassettes and trusses are constructed from sustainably-sourced timber.



weberend MT render system, webersil TF decorative finish and weberwall brick effect were used to reduce time onsite through the speed of application and drying time.

weberwall brick can be installed over three times faster than traditional brick slips and can also significantly reduce site waste. These products from Saint-Gobain Weber provide lightweight, fast-track solutions in multiple colours and finishes.



Issue Number: 3

Issue Date: 2023

Every care has been taken to ensure that the contents of this publication are accurate but Saint-Gobain Limited and its subsidiary companies do not accept responsibility for errors or for information which is found to be misleading. Suggestions for or descriptions of the end use or application of products or methods of working are for information only and Saint-Gobain Limited and its subsidiaries accept no liability in respect thereof. Before using products supplied or manufactured by Saint-Gobain Limited customers should satisfy themselves of their suitability.

Copyright © 2023 Saint-Gobain Limited

**Saint-Gobain House,
East Leake,
Loughborough,
Leicestershire,
LE12 6JU**

www.saint-gobain.co.uk



For further information please contact:

Richard Halderthay

Telephone: +44 (0)7823 328444

Email: Richard.Halderthay@saint-gobain.com