

# An Introduction to Saint-Gobain

UK & Ireland



**MAKING  
THE WORLD  
A BETTER  
HOME**

# As part of the Saint-Gobain Group, we are one of the world's top 100 industrial groups.

Saint-Gobain UK & Ireland manufactures high performance products and solutions that enhance daily life through creating great living places. We employ 5,600 colleagues and operate from 40 manufacturing and distribution sites in the UK and Ireland principally serving the construction sector, as well as automotive, industrial, energy, agriculture, telecommunications, utilities and healthcare.

Over 90% of our business serves the construction market, where we work closely with our customers to provide solutions that help developers, building owners, local authorities, building contractors, house builders and home owners create new buildings or renovate existing ones.

We place an important emphasis on helping our customers develop skills in building performance, improving comfort in buildings and developing practical skills to help them install our solutions. To do this we operate 8 training academies around the UK and have formal affiliations with 56 Construction Technical Colleges.

As well as providing high-performing solutions, we are focussed on how we can play a strong part in responding to some of the world's biggest challenges - including urbanisation, climate change, resource depletion, and wellbeing.

**19** brands in the UK and Ireland

**40** Manufacturing and distribution locations

over

**5,600** employees in the UK and Ireland

The image shows the Saint-Gobain logo on a glass facade. The logo consists of a stylized red and blue graphic above the text 'SAINT-GOBAIN' in blue. The background is a grid of glass panels with metal framing.

# SAINT-GOBAIN

## OUR PURPOSE

To make the world a better home

---

## OUR VISION

To be the worldwide leader in light and sustainable construction

---

## OUR VALUES

Saint-Gobain sets out its values in its General Principles of Conduct and Action which is applied in every business.

Adherence to these principles are a requirement to being part of the Saint-Gobain group.

---

## OUR PRINCIPLES

### Of Conduct:

- Professional commitment
  - Respect for others
  - Integrity
  - Loyalty
  - Solidarity
- 

### Of Action:

- Respect for the law
- Caring for the environment
- Worker health and safety
- Employee rights

# 75%

OF OUR SALES FOCUSED  
ON SUSTAINABLE  
CONSTRUCTION SOLUTIONS\*

# 360

YEARS OF EXPERIENCE



IN 2025 SAINT-GOBAIN WAS AGAIN PROUD TO BE RECOGNISED BY THE NON-PROFIT ORGANISATION CDP FOR ITS LEADERSHIP AND ITS ACTIONS IN THE FIGHT AGAINST CLIMATE CHANGE, BY BEING INCLUDED IN CDP'S PRESTIGIOUS "CLIMATE A LIST".

ONLY 2% OF THE COMPANIES ASSESSED RECEIVE AN "A" RATING.\*

# 3,700



EMPLOYEES WORLDWIDE ENGAGED IN R&D  
ACTIVITIES

# 7

 INTERNATIONAL  
CROSS BUSINESS  
CENTRES

## INNOVATION AT SAINT-GOBAIN

Never before has the need for the construction industry to innovate in order to meet the challenges of creating a truly sustainable building been more important.

Research, development and innovation are at the heart of our strategy, ensuring we explore new horizons and help our customers to grow their own businesses.

\*Global Top 100 Innovators: <http://top100innovators.com>

\*[https://www.saint-gobain.com/sites/saint-gobain.com/files/media/document/FY-2023\\_ENG-a.pdf](https://www.saint-gobain.com/sites/saint-gobain.com/files/media/document/FY-2023_ENG-a.pdf)

\* Source: [https://www.saint-gobain.com/sites/saint-gobain.com/files/media/document/20221214\\_CDP%20A%20List\\_VA.pdf](https://www.saint-gobain.com/sites/saint-gobain.com/files/media/document/20221214_CDP%20A%20List_VA.pdf)

\*<https://www.cdp.net/en/data/scores>

# A UNIQUE CAPABILITY TO PROVIDE PRODUCTS AND SOLUTIONS FOR INDUSTRY

**We care about building better for people and the planet by offering solutions that deliver sustainability and performance to drive the transformation of the construction market.**

Some of the best known and respected brands are part of the Saint-Gobain family of businesses in the UK & Ireland. They include British Gypsum, Gyproc, Isover, Glassolutions, Saint-Gobain Weber, Saint-Gobain Glass, Saint-Gobain PAM, Pasquill and Ecophon.

We have over 40 manufacturing sites across the UK & Ireland. We produce and distribute a range of high performance products and solutions that contribute to a more sustainable built environment, including:

- **Acoustic and thermal insulations, plasterboard and building solutions**
- **Energy-efficient glass and glazing solutions**
- **Industrial and construction mortars, fixings and façades**
- **High-performing plastics, ceramics and abrasives**
- **Premier ductile and cast iron pipes**
- **Construction chemicals for specialist applications and decarbonising construction**
- **Off-site timber and steel frame structural solutions**



# OUR SOLUTIONS BRING SUSTAINABILITY AND PERFORMANCE TO OUR CUSTOMERS

## SUSTAINABILITY

### PROTECTION OF THE PLANET

- Reduction of CO<sub>2</sub> emissions and energy consumption
- Energy renovation
- Circularity of solutions

### COMFORT

- Health and safety
- Visual comfort, acoustics, air quality
- Low environmental impact

## PERFORMANCE

### ECONOMIC VALUE

- Productivity
- Financial earnings
- Affordable housing

### CUSTOMER EXPERIENCE

- Aesthetics and design
- Trusted solutions
- Recovery and recycling services

# EXTERIOR SOLUTIONS

---



Saint-Gobain Glass manufactures innovative and environmentally-friendly flat glass products to serve a range of construction markets.



A processor and distributor of glass and glazing systems in the UK.



Weber specialise in the manufacture of construction mortar products including renders and decorative finishes, tile fixing products, floor screeds, technical mortars and external wall insulation systems.



Kilwaughter Minerals serve their customer base in the construction and agriculture industries throughout the UK and Ireland. They have 3 market brands: K Rend, which is a market leader in renders and mortars; K Systems which enables sustainable homes through EWI solutions and Kilwaughter Lime which focuses on soil and animal health.



Market leading K Rend is the UK's largest independent silicone render manufacturer. For 28 years, K Rend has offered a high quality extensive range of renders and finishes, designed to give a durable weatherproof coating and a natural looking finish.



K Systems produce a diverse range of tested and certified external wall insulation systems suitable for all types of construction. K Systems aim to achieve architectural aspirations with a wide choice of colours, textures & tailored detailing solutions.

# OSS (OFF-SITE SOLUTIONS)

---



Intrastack provides panelised, light-gauge steel frame (LGSF) solutions, constructed off-site; bringing certainty to all areas of the project process.



Specialists in the supply of engineered timber solutions to all sectors the construction industry, with a national network of design and manufacturing sites.



Roofspace manufactures, delivers and installs high quality panelised roofing and whole house solutions throughout the UK.



Scotframe manufactures and supplies timber frame kits to self-builders and commercial developers, from factories located in Scotland.

# SAINT-GOBAIN INTERIOR SOLUTIONS

---



The UK's leading manufacturer of high-performance drylining solutions, that deliver sustainability and performance for both our people and our planet. Through pioneering solutions we will help create a positive legacy, building great spaces to work, rest and play.



Develops mineral wool insulation solutions that deliver sustainability and performance. It serves those who build and those who spend time in buildings, while addressing a variety of markets in construction, transportation and industrial applications.

# IRELAND

---



Gyproc is the market leader in plaster, plasterboard and drylining systems, manufacturing in Ireland since 1936 and has become a major authority in the Irish construction industry.

# RETAIL SOLUTIONS

---



Okarno distributes a wide range of construction products from market leading brands such as Gyproc, Thistle and Weber. From fillers and plasters to tape and render, Okarno supply both trade and retail customers through flexible nationwide delivery, including a 48-hour parcel service.

# SAINT-GOBAIN BRANDS, PRESENT IN THE UK & IRELAND BUT OPERATING GLOBALLY

Saint-Gobain has several global brands which also are present in the UK - these brands manufacture products which are construction specialities or high performance solutions. Discover more about these brands below:

## HIGH PERFORMANCE SOLUTIONS AND CONSTRUCTION SPECIALITIES



A leading supplier of acoustic suspended ceilings, free-hanging units and wall absorbers in the UK & Ireland. Solutions for all sectors, including education, health, office, industry and retail.



A world-leading supplier of industrial plaster and gypsum products with high performance solutions for fibrous and decorative plasters, construction materials, ceramics, dental and personal care and food, agriculture and environment markets.



Manufacturer of elastomeric insulation materials for the technical pipe insulation in domestic technology, building technology and industry.



Leca® Lightweight Aggregate (LWA) is a natural, unique and sustainable lightweight clay aggregate. Leca® LWA has remarkable properties which ensure its versatility for use in a vast number of structural and geotechnical applications.



Saint-Gobain PAM UK is the premier supplier of ductile iron pipes, fittings, valves and hydrants for the utilities sector, ductile iron access covers and gratings for the highways and telecoms sector and cast iron soil, drain and rainwater systems for the building industry.



Focused on the construction and industrial markets, ADFORS offers solutions based on a complete range of textile and coating technologies using fiberglass yarns, synthetic fibres, and natural fibres.



# SAINT-GOBAIN SOLUTIONS SUPPORT NEW BUILD, COMMERCIAL BUILDINGS AND RENOVATION

Our solutions help to create high-performing buildings that combine comfort, sustainability and performance.

We have solutions for all building types whether residential or commercial, new build or renovation.

Our solutions are developed in collaboration with our customers to ensure the correct specification of products and solutions are chosen to meet the performance customers require for their project.

Our solutions can include a high proportion of Pre-Manufactured Value (PMV) via open or closed panel timber or steel construction.

## Our solutions for residential new build and renovation



### Our services to support customers

- Waste collection & recycling services
- Professional site management, safety, installation training
- Building performance testing (Air tightness/thermal)
- Technical Advice Support
- Multi-brand logistics service for site deliveries provided by Okarna

# Our solutions for new commercial buildings



# SAINT-GOBAIN SURFACE SOLUTIONS



We offer powerful, precise and user-friendly solutions enabling customers to shape and surface finish all types of materials even in the most complex and challenging applications across a diverse range of markets.

## SAINT-GOBAIN HIGH PERFORMANCE SOLUTIONS



ABRASIVES / CERAMICS / PERFORMANCE PLASTICS / LIFE SCIENCES

### SAINT-GOBAIN ABRASIVES:

Saint-Gobain Abrasives is the world's leading manufacturer of abrasives, offering powerful, precise and user friendly solutions enabling customers to shape and surface-finish all types of materials even in the most complex and challenging applications across a diverse range of markets.

### SAINT-GOBAIN LIFE SCIENCES

Saint-Gobain Life Sciences is a world leader in the development and integration of innovative materials and components, creating customized single-use solutions for the biopharmaceutical and cell therapy markets. Through its unparalleled technological expertise and worldwide resources, it develops integrated solutions for critical fluid management to meet your evolving needs.

### SAINT-GOBAIN CERAMICS:

Saint-Gobain Ceramics designs, develops, and supplies solutions and services for extreme operating industrial conditions. The engineered ceramics and refractory products are manufactured to the highest industrial standards and deliver enhanced performance while minimizing environmental impact.

### PERFORMANCE PLASTICS

Saint-Gobain performance Plastics is a global leader in high-performance, technology-driven materials. With expertise concentrated on film and fabrics, it provides proven products, customized solutions, and complete systems to customers across a diverse range of sectors helping create innovative materials that provide protection, easy release, insulation, and friction control. And we seek to collaborate in making even more possible.



Designing and producing innovative textile solutions for reinforcement in the habitat and industrial markets, thanks to knowledge built over the past 50 years.



Farécla Products Ltd is a manufacturer of surface finishing products which are used on a wide variety of substrates from compounds and applicators, to paint cups and microfibre cloths.



Industrial performance abrasive solutions for cutting, grinding and sanding to polishing for the metal fabrication foundry, rail, construction and hardware, marine and energy industries.



The world leader in abrasives for over 130 years, providing the widest portfolio of cutting, grinding, blending, finishing and polishing solutions for all markets, materials and applications.



Designs and manufactures tolerance rings (radial spring fasteners) for the automotive, hard disk drive and appliance markets.



SWISSPACER's warm edge spacer bars insulate the edges of an energy efficient sealed unit, keeping the panes of glass apart and maintaining the integrity of the air gap that insulates a building from heat loss through windows.



Vetrotech fire resistant glass offers the ultimate protection for people and property, while providing the aesthetic and multi-comfort qualities you expect from architectural glass.

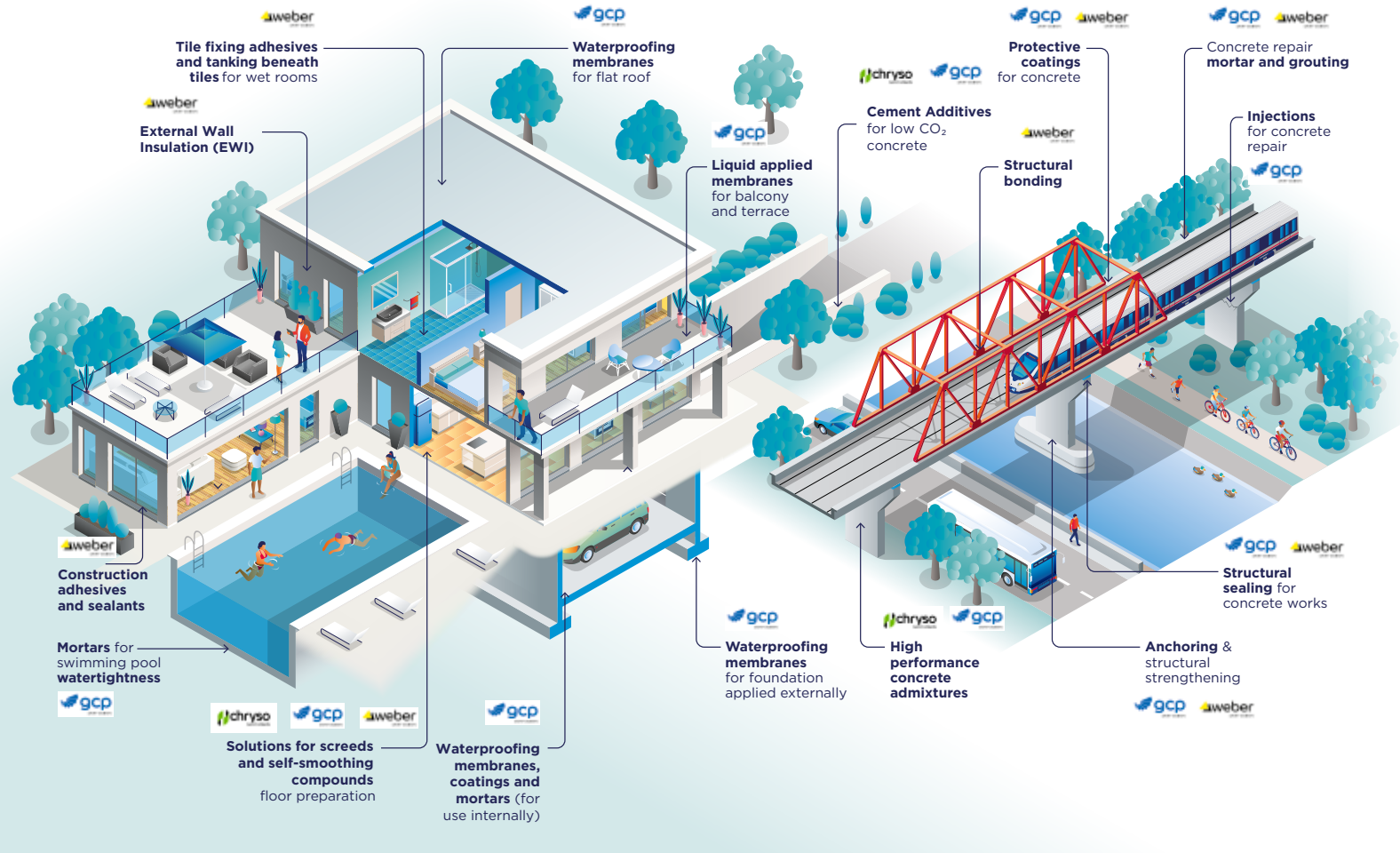


Provides diamond abrasive solutions for cutting, drilling, milling, bevelling and grinding of flat glass.

# SAINT-GOBAIN CONSTRUCTION CHEMICALS

Saint-Gobain Group is developing innovative solutions, through its acquisitions in 2021 and 2022 of Chryso and GCP Applied Technologies. These acquisitions boost Saint-Gobain's footprint in construction chemicals which improve the performance of materials and help to decarbonize the construction sector.

## SAINT-GOBAIN SOLUTIONS FOR CONSTRUCTION CHEMICALS AND BUILDING PERFORMANCE



### GCP Applied Technologies:

GCP's portfolio of construction products includes concrete and cement additives, building materials and technologies that ensure specified quality and enhance business productivity. The world's most successful architects, producers, builders and contractors insist on GCP brands and solutions for their construction projects.

With products that last longer and make construction – and the manufacturing of its materials – more energy efficient and less wasteful, GCP makes a tangible difference on the carbon footprint of our planet.



CHRYSO designs, produces, markets and delivers chemical solutions that help creating sustainable building materials.

These solutions include concrete admixtures which are used to achieve concrete performance, produce low CO<sub>2</sub> concrete, reduce construction costs and enhance productivity.



Weber specialise in the manufacture of construction mortar products including renders and decorative finishes, tile fixing products, floor screeds, technical mortars and external wall insulation systems.

# COMMITTED TO SUSTAINABLE CONSTRUCTION AND A NET ZERO FUTURE

**Saint-Gobain is committed to being a leading contributor to the transformation to more sustainable construction.**

Faced with the threat of climate change and the risks related to the average increase in temperature, we seek to support the development of a low-carbon economy.

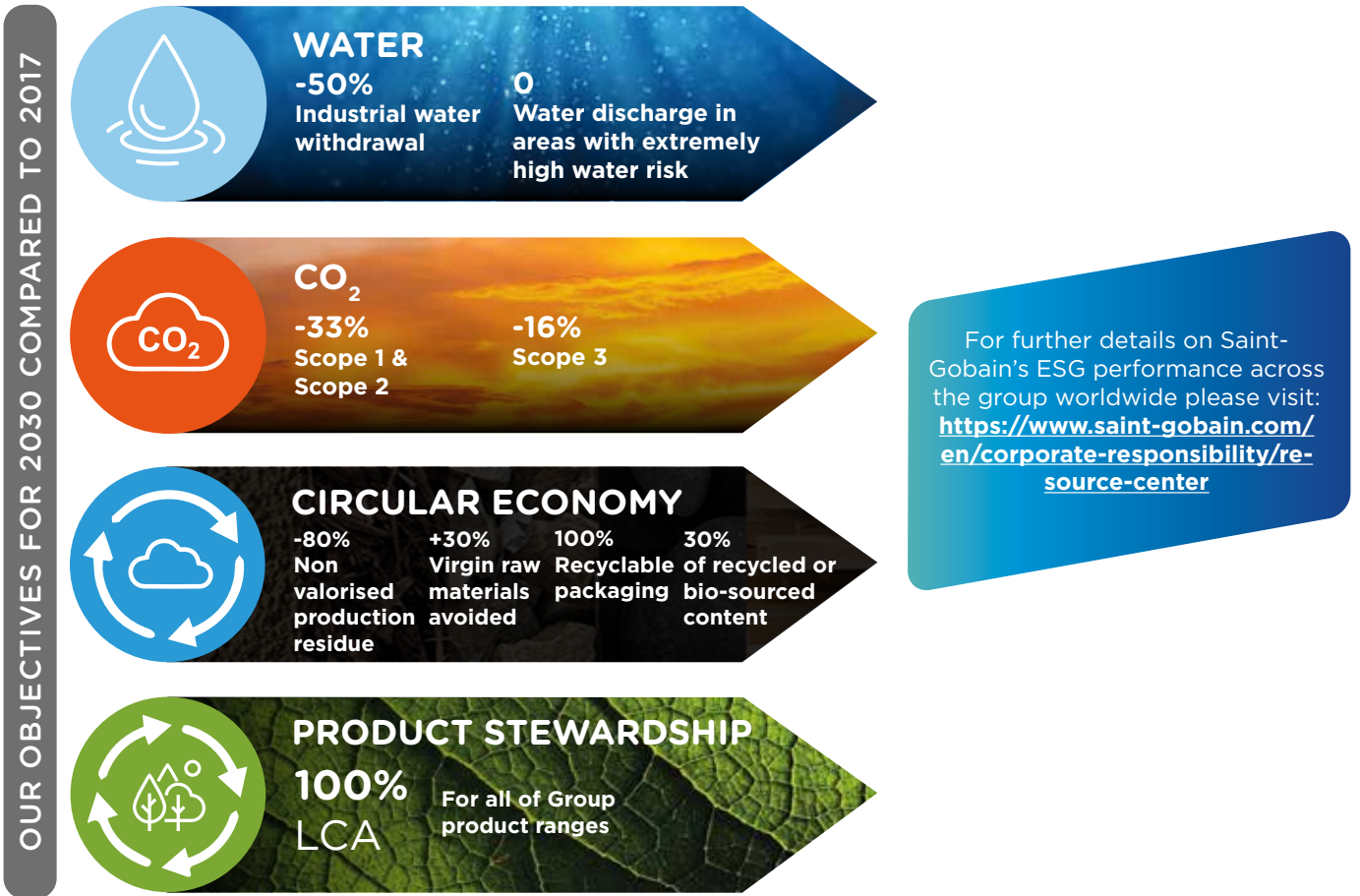
Our vision is to be the global leader in light and sustainable construction. Our objective is to help customers reduce their CO<sub>2</sub> emissions through the use of our products and solutions or by reducing the carbon impact of our products in production.

In 2019 at the UN Global Compact Saint-Gobain signed the 'Business Ambition for 1.50C' pledge and set out our goal to achieve net zero carbon by 2050. As we make progress towards our 2050 goal, we strive to

reduce carbon in more areas of the business, moving from incremental improvements to significant step changes, being also able to offset during this period the potential increase of our emissions due to growth.

To achieve carbon neutrality, we have published a CO<sub>2</sub> roadmap. The roadmap incorporates the Group's new commitments through to 2030 in terms of reducing not only its direct and indirect carbon dioxide emissions, but also the emissions along its value chain. These new targets for 2030 (set out on the right) have been validated by the Science-Based Targets (SBT) initiative<sup>1</sup> which considers them aligned with the Group's 2050 net-zero commitment.

1 <https://sciencebasedtargets.org/companies-taking-action>



For more information on our approach to Climate Change and Sustainability visit: [www.saint-gobain.co.uk/CSR](http://www.saint-gobain.co.uk/CSR)

# SOLUTIONS FOR SOCIAL HOMES THAT BENEFITS TENANTS AND HOUSING PROVIDERS:

---

Building high performing homes doesn't have to wait for the Future Homes Standard to come into force in 2025. Solutions, services and support is available now to help social housing providers build high-performance homes. Doing so, brings many benefits, not just to the providers but also to residents and wider society. **Learn below how residents and social housing providers benefit below:**

## ENERGY EFFICIENCY & CARBON SAVINGS:

High-performing building fabric improvements, such as higher levels of insulation and air-tightness, and energy-efficient windows reduce heat loss, leading to lower energy consumption. This not only reduces utility bills for residents but also supports our providers and the UK's sustainability goals by lowering carbon emissions.

## COST SAVINGS:

Lower energy consumption can lead to reduced operating costs for housing associations - allowing providers to reinvest more in the maintenance and improvement of properties to benefit residents.

## RESIDENT COMFORT:

Improved building fabric enhances comfort for residents by maintaining stable indoor temperatures and reducing draughts. This improves tenant satisfaction and wellbeing, making properties more attractive and potentially reducing fallow or turnover periods.



## SUSTAINABILITY:

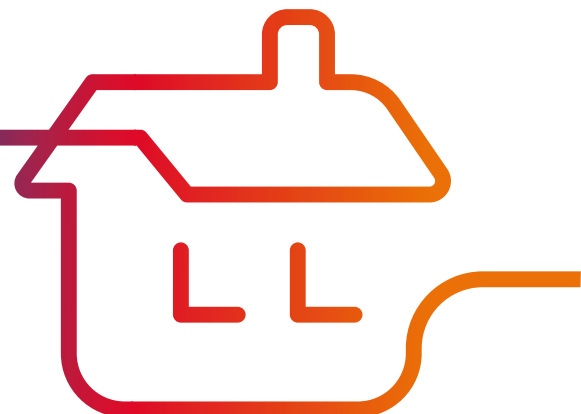
Investing in highly energy-efficient building fabric aligns with environmental goals and demonstrates a commitment to sustainability, which can improve the reputation of housing associations and attract socially conscious investors and partners.



## LONG-TERM ASSET MANAGEMENT:

Well designed high-performance building fabric can extend the lifespan of properties, increase their overall value and reduce the need for costly repairs and renovations in the future.

By investing in high-performing buildings and considering a fabric-first approach to buildings and developments, social housing providers support the wellbeing of residents. This also contributes to the long-term success and mission of the housing associations.



# CUSTOMER TRAINING

With so many specialist products on offer, Saint-Gobain has dedicated training to support its customers to create high performing buildings of the future.

Saint-Gobain brands British Gypsum, Gyproc, Isover, PAM and Weber present flexible training options including online videos and classroom courses to suit a variety of learners.



CUSTOMER TRAINING AT THE SAINT-GOBAIN WEBER TECHNICAL ACADEMY



TRAINING AT THE ADRA ACADEMY

For example, each Internal Wall Insulation system is supported by Saint-Gobain Interior Solutions Specialist installer training courses to ensure that products are installed to meet standards.

Saint-Gobain also offer a comprehensive loft insulation online training course, which is designed to give contractors and installers an understanding of building physics including why insulation is required, condensation issues and the importance of ventilation.

Customers can also book Continuing Professional Development (CPD) at their workplace or location of choice to support their development and knowledge. These include Weber and Ecophon's RIBA (Royal Institute of British Architects) approved CPD seminars and presentations.

# SOCIAL VALUE AT SAINT-GOBAIN UK AND IRELAND

---

Since the Social Value Act came into force in 2013 those who engage in or with public services should deliver economic, social and environmental benefits.

Saint-Gobain is a positive partner to organisations delivering public services and has an active programme of activities that support social value goals.

For Saint-Gobain our delivery of social value is an embedded element of how we deliver our guiding purpose 'Making the World a Better Home'. It is also embedded in our vision to be the worldwide leader in light and sustainable construction.

Our delivery of social value starts with manufacturing high performing products and solutions that help our customers build great buildings and homes that improve people's comfort, support positive wellbeing and reduce running costs and help decarbonise the construction sector. We believe the delivery of these solutions that are at the heart of construction decarbonisation, provide important building renovation solutions and create new homes that are capable of being operationally zero carbon has enormous social benefit and transforms people's lives.

We also engage in a wide variety of activity in our communities, with partners whose goals and aims are aligned to our core areas of social support:

- **Helping young disadvantaged people gain skills in construction and;**
- **Help provide energy efficient social spaces for communities.**

Learn about some of the ways in which we play our part in delivering social value to communities around the UK.

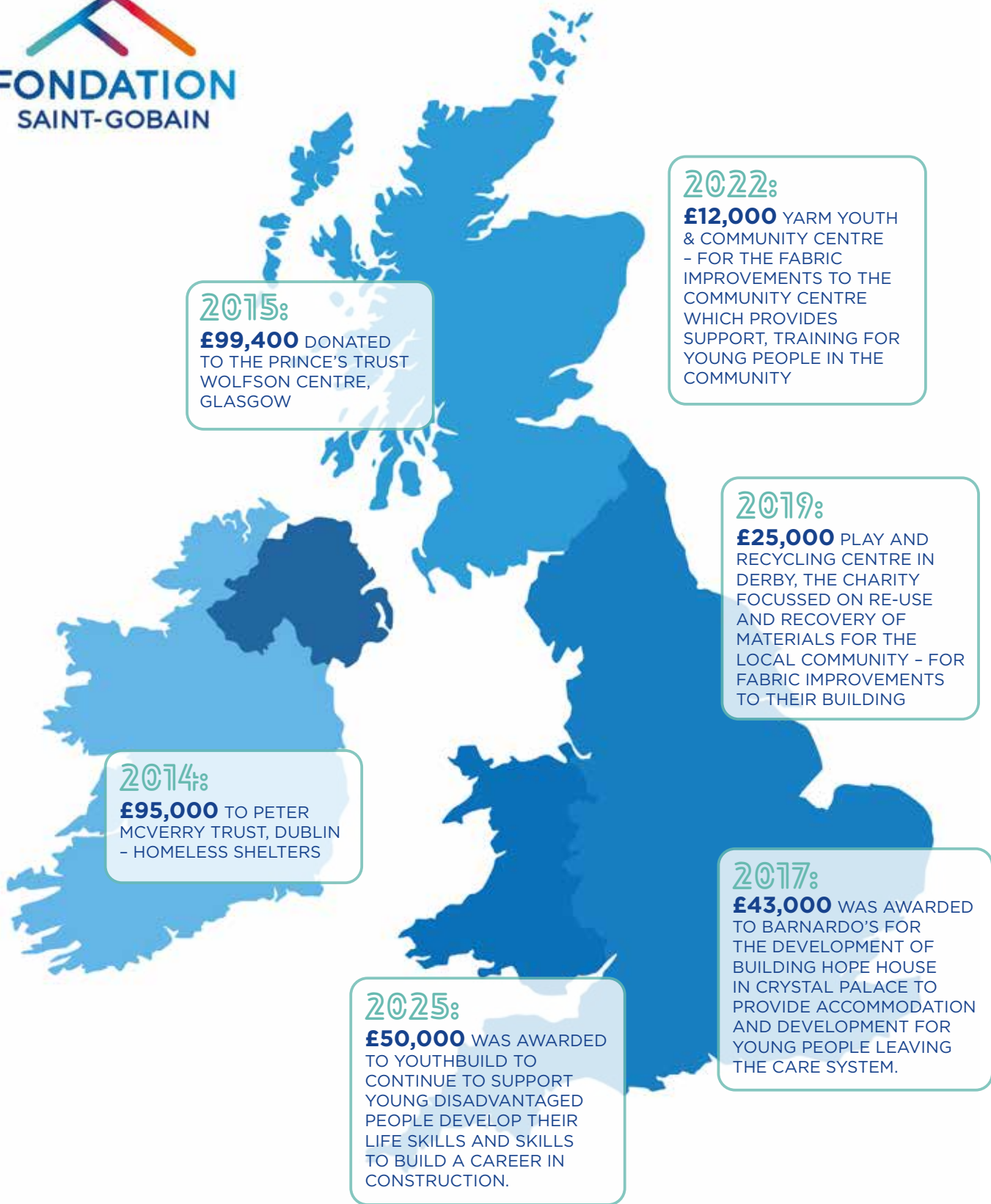
<https://www.saint-gobain.co.uk/socialvalue>



# THE SAINT-GOBAIN FOUNDATION

Our [Saint-Gobain Foundation](#) has been delivering social value worldwide since 2008 with the core focus on sustainable social housing and professional skills for young people.

Through the Foundation, we empower our colleagues to support projects that benefit local communities in the fields of sustainable social housing and education. In recent years the Foundation has provided the following grants:



# INDUSTRY LEADING RESEARCH TO BUILD BETTER HOMES

## eHome2

Saint-Gobain is committed to finding innovative solutions to some of the most pressing issues facing the construction industry, including the need to reduce carbon emissions and increase the energy efficiency of buildings.

Saint-Gobain has partnered with Barratt Redrow and a host of innovative companies to understand how sustainable housing can be delivered at scale using construction solutions manufactured off-site, in line with our vision to be the worldwide leader in light and sustainable construction.

Working in the new state of the art facility at the University of Salford - Energy House 2.0 - Saint-Gobain and partners have constructed a three bed detached house, designed to meet future performance and regulation requirements. This project will provide an understanding of how to deliver zero carbon housing at scale using off-site lightweight construction solutions, and how these homes will meet the Future Homes Standard. Within eHome2 we are piloting the use of next generation heating and ventilation technologies as well as smart technology to enable occupants to change the temperature and turn on the shower at the click of a button.



**“Saint-Gobain is investing in our future through the creation of sustainable solutions, driven by customer-centric innovation, to address the needs of tomorrow, today”.**

*Tom Cox, Technical and Development Director,  
Saint-Gobain Off-site Solutions*



### FABRIC-FIRST APPROACH

The fabric-first approach ensures that the roof, walls, windows, floors and doors of a building are well insulated and air-tight, which helps to create an efficient and low energy building. eHome2 brings together Scotframe’s high performing timber frame solution, sustainable glass mineral wool insulation from Isover, and glass with enhanced thermal insulation to reduce heat loss through the window. The solutions used for eHome2 have all been chosen for their ability to create a sustainable, efficient and comfortable home.

Almost two-thirds of the heat generated in a home is lost through the building fabric. And up to 35% can be lost through uninsulated walls.

# eHome2



**Saint-Gobain has partnered with Barratt Redrow and a host of innovative companies to understand how sustainable housing can be delivered at scale using construction solutions manufactured off-site, in line with our vision to be the worldwide leader in light and sustainable construction.**

## OBJECTIVES

The eHome2 comprises innovative solutions from across the Saint-Gobain group together with other innovative partners.

The objectives of the eHome2 are to:

Understand how to deliver Net Zero carbon housing at scale using off-site, lightweight construction solutions

Monitor the performance of the house to inform future innovations

Research fabric and services efficiency, thermal comfort, usability and resilience to external climates

eHome2 has British Gypsum plaster on British Gypsum boards with ACTIVair® Technology plaster. ACTIVair® makes indoor air healthier by eliminating up to 70% of formaldehyde present in indoor air.

eHome2 also features light Gauge Steel (Ultrasteel) internal partitions and Magnetic plaster.



Isover's high-performing, sustainable glass mineral wool insulation products are installed at eHome2. This includes Acoustic Partition Roll, for internal partitions which delivers a measurable reduction in sound transmission. It also includes Timber Frame Roll 35 in the external walls and Spacesaver Plus in the loft which help to reduce heat loss within the building and decrease energy costs. They are manufactured in the UK with an electric furnace powered through a renewable energy tariff.



The Category 2 Closed Panel timber frame system includes insulation that is maintenance free and long-lasting. The system cuts energy bills, and innovative connections that reduce thermal bridging design and enhance airtightness. With the inclusion of critical vapour control membranes, service zones and externally fitted battens applied in the factory the system speeds up build time and ensures a high performing fabric achieving 0.13 W/m<sup>2</sup>k.



Saint-Gobain Glass' PLANITHERM ONE T low-e coated glass has enhanced thermal insulation optimised for both double and triple glazing. The UK manufactured glass reduces heat loss through the window, resulting in significant energy savings and has low solar gain, reducing overheating in the home. STADIP SILENCE acoustic laminated safety glass delivers enhanced security and safety, improved noise-control, and UV light protection to reduce furniture-fade.

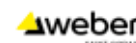


Posi-Joist™ floor cassettes allow for the integration of services, particularly Mechanical Ventilation & Heat Recovery systems (MVHR). Top hung joist detail reduces thermal bridging at wall-floor interfaces. Roof trusses were used to construct a thermally efficient attic space. Both the floor cassettes and trusses are constructed from sustainably-sourced timber.



weberend MT render system, webersil TF decorative finish and weberwall brick effect were used to reduce time onsite through the speed of application and drying time.

weberwall brick can be installed over three times faster than traditional brick slips and can also significantly reduce site waste. These products from Saint-Gobain Weber provide lightweight, fast-track solutions in multiple colours and finishes.



**Issue Number:** 4

**Issue Date:** 2025

Every care has been taken to ensure that the contents of this publication are accurate but Saint-Gobain Limited and its subsidiary companies do not accept responsibility for errors or for information which is found to be misleading.

Suggestions for or descriptions of the end use or application of products or methods of working are for information only and Saint-Gobain Limited and its subsidiaries accept no liability in respect thereof. Before using products supplied or manufactured by Saint-Gobain Limited customers should satisfy themselves of their suitability.

**Copyright © 2025 Saint-Gobain Limited**

**Saint-Gobain House,  
East Leake,  
Loughborough,  
Leicestershire,  
LE12 6JU**

[www.saint-gobain.co.uk](http://www.saint-gobain.co.uk)



**For further information please contact:**

Richard Halderthay

Telephone: +44 (0)7823 328444

Email: [Richard.Halderthay@saint-gobain.com](mailto:Richard.Halderthay@saint-gobain.com)